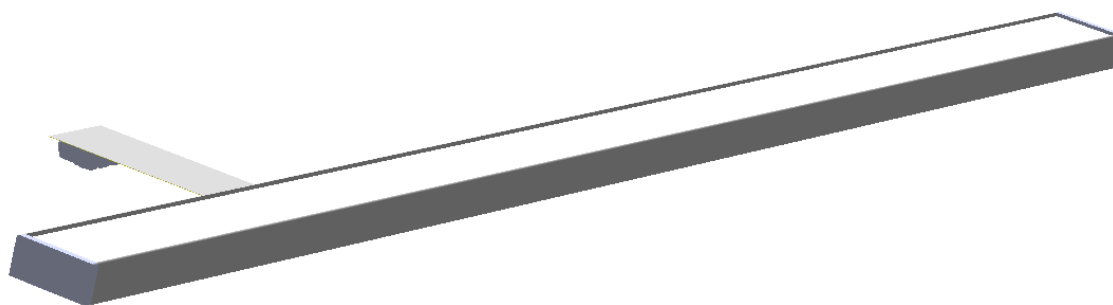


AIRELIGHT LINEAR2 SC 1.0 CHANNEL



DESCRIPTION

The Airelight Linear2 SC 1.0 Channel provides a robust solution for surface mounted lighting applications on 15/16" TBAR systems. Designed to maintain the Airelight™ luminaires' slim profile look, the aluminum profile serves as a compact housing and provides designers with 2 - 8' standalone fixture options. The magnetic alignment clips on each Airelight Linear2 SC 1.0 Channel simply align and lock into place, providing for an easy installation and a secure attachment to the T-Bar.

SPECIFICATIONS

Description	Airelight Linear2 SC 1.0 w/ Anodized Aluminum housing (15/16" TBAR)
Color	Light Grey, Black, (Custom colors available with surcharge)
Dimensions	1.03" x 0.42" (W x H)
Length	2 - 8' (See Lookup Table Below)
Power Consumption	7.2W per foot
Lumens Per Foot(25V)	714@5000K / 653 @ 4000K / 638 @ 3500K / 619 @ 3000K / 581 @ 2700K
Efficacy (lms/W)	99@5000K / 91 @ 4000K / 89 @ 3500K / 85 @ 3000K / 80 @ 2700K
CRI	90+ , 80+(5000K CCT)
Interconnect/Cabling	Reinforced flex cabling to plenum: Brings luminaire connection above the grid Plenum Rated / 2POLE PUSHWIRE CONN(16-12AWG)
Warranty	5 Years

Certifications



PRODUCT CODE

Product Line		Width		Length		CCT		CRI		Finish
AL2C	-	1.0	-	6'	-	35K	-	90+	-	BK
Airelight Linear2		1.0"		2'-8'		27K		90+		BK
SC Channel						30K		80+(50K)		AL
						35K				WT
						40K				RAL#
						50K				RAL#

877.298.0092



goldeneyelighting.com

V 1.2

GRID ATTACH OPTIONS (SC CHANNEL)



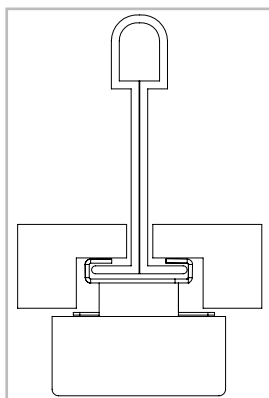
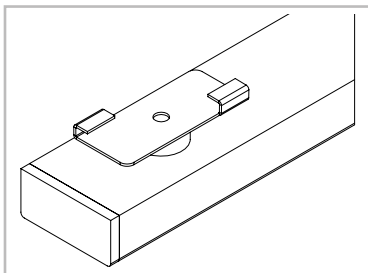
1.0 LINEAR2 SC CHANNEL TO 9/16" TBAR(TEGULAR)

C1

Tegular Panel (9/16")

*aligns 1.0 Linear2 SC Channel to 9/16" TBAR
w/ Spacer for Tegular Ceiling Tiles
*Available Lengths: 2, 4, 6, 8'

TBAR Swivel Connector (9/16")



1/4" Panel Depth (Square Tegular Ceiling Tiles)
Silhouette XL 9/16" Bolt Slot - 1/8" Reveal
CertainTeed EZ Stab Bolt Slot System - 1/8"
USG DONN Brand Finline 1/8 DXFF 9/16"
*inquire about other compatible 9/16th t-bar systems

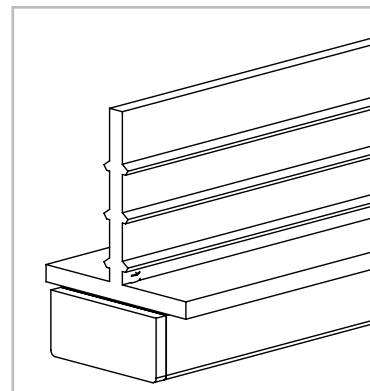
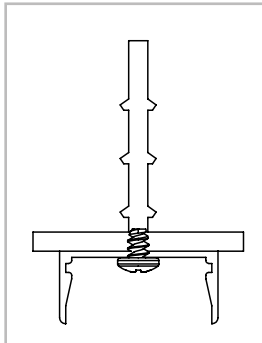
1.0 LINEAR2 SC CHANNEL TO GRIDLOCK TBAR

C2

Gridlock TBAR

*aligns 1.0 Linear2 SC Channel to Gridlock TBAR
*#6 blunted (3/16") SS screw(s) provided
*Available Lengths: 2, 4, 6, 8'

Drill 3/32"(2.5mm)
pilot hole into TBAR



1/4" Panel Depth (Square Ceiling Tiles)
Gridlock Fiberglass TBAR