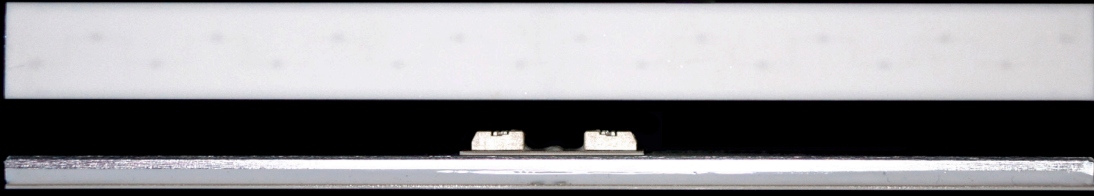


AIRELIGHT™ LINEAR ES 0.5



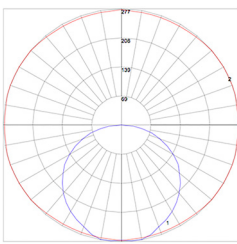
AIRELIGHT™ LINEAR ES 0.5



Description: The Airelight™ Linear ES 0.5 luminaire allows for ultimate flexibility for all lighting projects. Utilizing its ultra slim profile and light weight, the Airelight™ Linear ES 0.5 is ideal for suspended, surface mounted, embedded, and under cabinet lighting applications (See "Mounting Options" on following page). Capable of 495 lumens/foot (infinitely dimmable) @ 124 lumens per watt efficacy, the Airelight™ Linear ES 0.5 can be installed individually or linked continuously, embedded in a ceiling or wall, suspended, or surface mounted anywhere light is needed. A truly sustainable light fixture, the Airelight™ Linear ES 0.5 is certified Red List Free by the International Living Future Institute (ILFI), contains no harmful materials and is comprised of 98% ceramic and aluminum. Applications: Office, Industrial, Retail, Display, Under Cabinet, Task, and Residential Environments

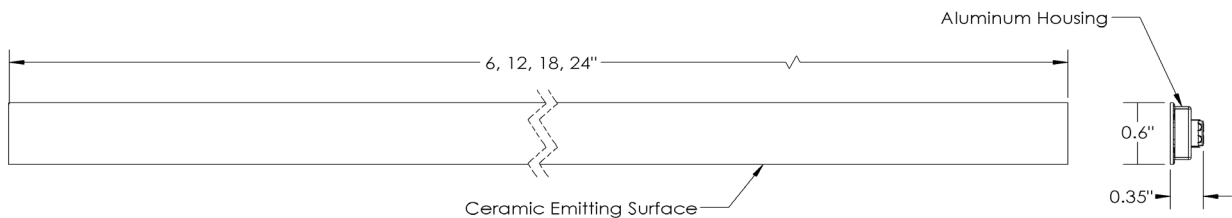
SPECIFICATIONS

Color Temperature	4000K, 3500K, 3000K, 2700K
Beam Angle	Lambertian
Max Fixture Run Length	24' with Adjustable 24VDC 100W Power Supply; Unlimited with Additional Power Supplies or POE Channels
Power Consumption	4.0W per foot
Lumens Per Foot	495 (4000K) / 486 (3500K) / 486 (3000K) / 444 (2700K)
Efficacy (lms/W)	124 (4000K)
CRI	82-84 typical
Available Lengths	6", 12", 18", 24"
Interconnect/Cabling	SMT Connector/ 2CONN Wire-20AWG/90C (not included)
Operating Temperature	-10°F to 115°F / -23°C to 46°C
Operating Voltage	24.15VDC (with Adjustable 24VDC Power Supply)
Dimming	1-100% via Compatible Low Voltage PWM or 0-10V
Rating	Dry/Damp Rated
Warranty	5 Years
Weight	0.7oz/ft (66g/m)
Dimensions	W 0.6" x H 0.35" x L 6, 12, 18, 24"



Photometric Data:
*Perfectly lambertian output

Certifications



877.298.0092



goldeneyelighting.com

V 1.8

ORDER CODES

Product Line	Width	Model	Length	CCT	CRI
AL	- 0.5	- ES	- 24	- 40K	- 80+
Airelight™ Linear	0.5"	ES	6" 12" 18" 24"	27K 30K 35K 40K	80+

POWER SUPPLY SELECTION

Airelight™ luminaires require an external DC power supply for operation. Identify total system wattage needed. Order the type and quantity of Class 2, 24VDC Power Supply(s) that meets your requirement.

Power Supply Calculation
 Linear Feet Required x Power Consumption (4.0W) =
 Total System Wattage

e.g. : 18ft x 4.0W = 72W (See Table A)

POWER SUPPLY COMPATIBILITY FOR AIRELIGHT™ SYSTEM

Total System Wattage	Compatible Power Supply
< 40W	SKU# 36789
< 60W	SKU# 42110
< 75W	SKU# 56975
< 80W	SKU# 85376
< 100W	SKU# 40515
< 200W	SKU# 90945

Table A

POWER SUPPLIES

SKU#	Description
90945	ERG 2X 100W UL Listed XLD200-2-24V-FC Driver in Enclosure
40515	Meanwell HLG-100H-24A Power Supply in ETL Listed Enclosure (12x3.5x2")
85376	Meanwell HLG-80H-24A Power Supply in ETL Listed Enclosure (12x3.5x2")
56975	ERG 75W UL Listed XLD75-1-24V-FC Driver in Enclosure
42110	Meanwell HLG-60H-24A Power Supply in ETL Listed Enclosure (12x3.5x2")
36789	Meanwell HLG-40H-24A Power Supply in ETL Listed Enclosure (12x3.5x2")

CONTROLS

31935	Illumra Wireless Dimmer #E9X-D02FL	25251	Illumra Dual Rocker Switch #E9T-S2AWH
59493	Illumra Dimmer (Hardwired) #NWO-D02FP (0-10V)	29053	ERG PWM Dimmer ERGL-DIMC2 (1 Ch 0-10V Wired)
83374	Illumra Single Rocker Switch #E9T-S1AWH	10912	ERG PWM Dimmer ERGL-DIM2IN (2 Ch 0-10V Wired)

MOUNTING OPTIONS

Designed to maintain the Airelight™ luminaires' slim profile, the optional snap channel profiles serve as stylish and minimalistic housing options. The attachment clips on the Airelight ES model simply snap into the specified channel, providing a secure attachment and easy installation.

50512 / 59885 / 15437	Snap Channel (Airelight Linear ES 0.5) Black: 4 / 6 / 8ft
30231 / 74552 / 34948	Snap Channel (Airelight Linear ES 0.5) Light Grey: 4 / 6 / 8ft
19390	Snap Channel (Airelight Linear ES 0.5) White/Custom: 8ft
56980	Mud-In Channel (Airelight Linear ES 0.5) Light Grey: 8ft
63634 / 99636	End Cap (Snap Channel Airelight Linear ES 0.5) Qty: 2: Black, Light Grey
67667	Mounting Plate(2): For embedding to non magnetic surface